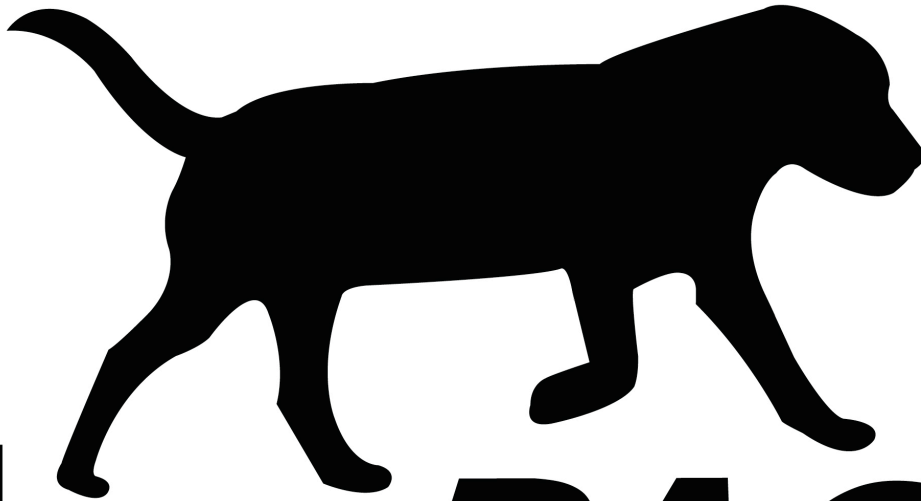


# dogPACER QUICK START GUIDE

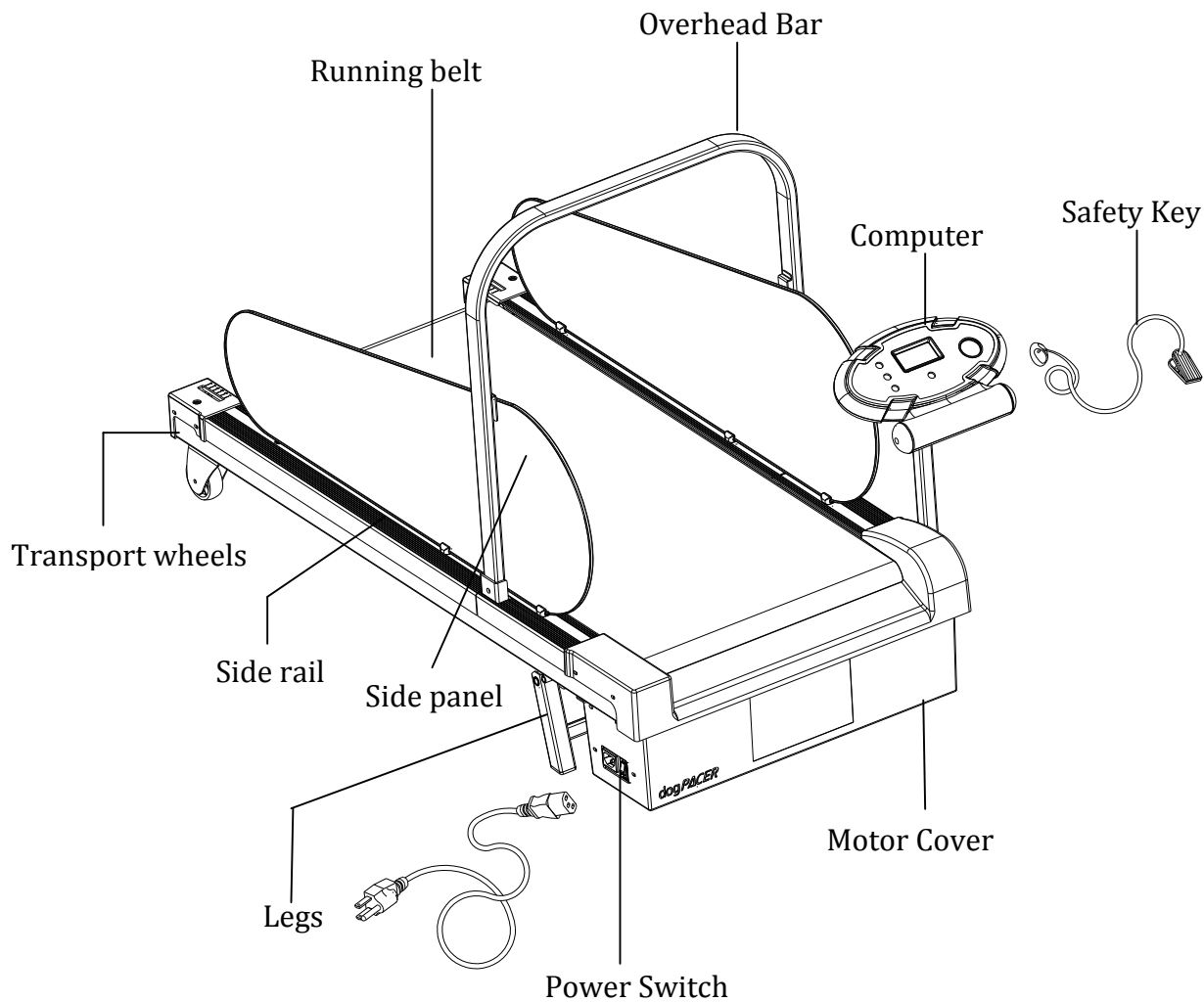


dog **PACER**<sup>TM</sup>  
*Minipacer*

For latest info, tips, and photos go online to:  
[www.dogpacer.com](http://www.dogpacer.com)

***Congratulations! You have taken the first step in your dog's health, happiness and a better life!***

***We encourage you to go online to [www.dogPACER.com](http://www.dogPACER.com) to see other dog owners running their dogs and to join our Facebook community for special offers and information.***



## **1.0 Initial Assembly**

Protect your floor by placing the dogPACER on cardboard, a mattress or carpeted surface.

Take the dogPACER out of its box. Lay in an open area so you have plenty of room to work.

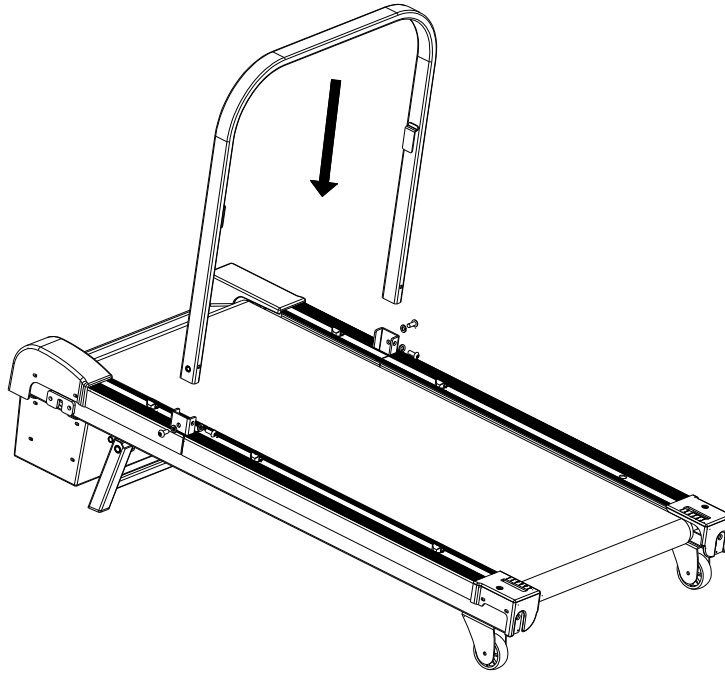
Open the legs and lock them into place using the Centre Pins (Bolt Ø6).

NOTE: You only need to use 2 of the Centre Pins – the additional 2 are used for the incline feature.

## 2.0 Attach the Overhead Bar

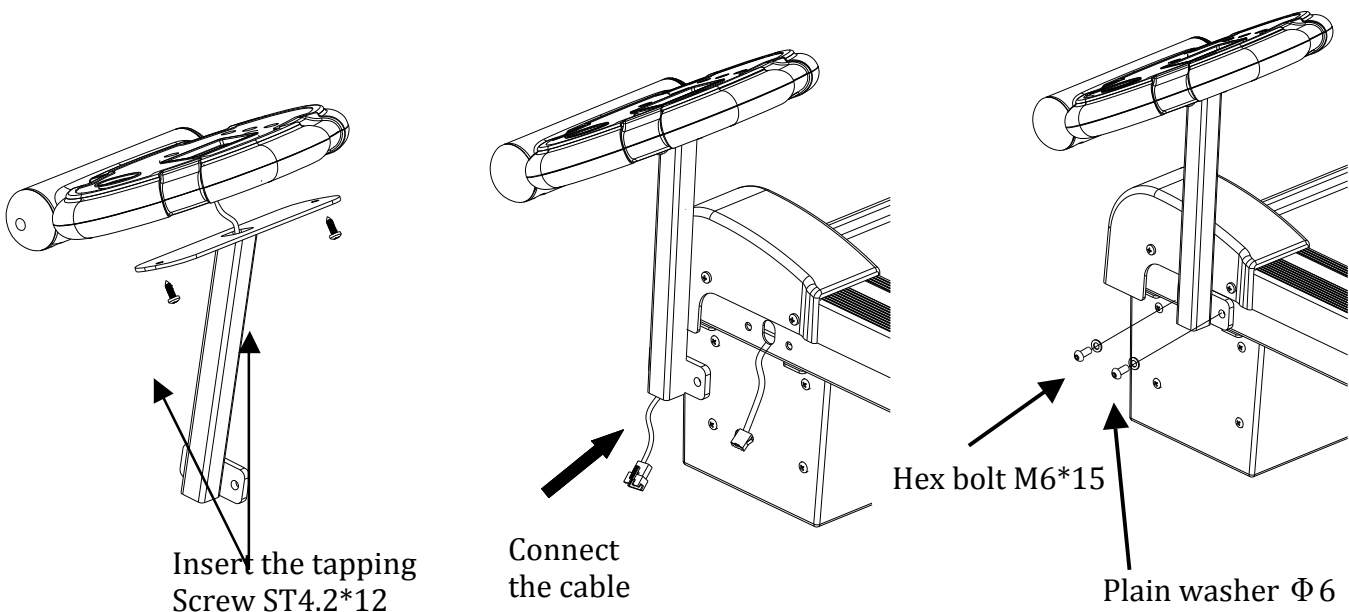
Put the *overhead bar* into place using the 4 M6\*15 screws.

NOTE: Please insert all the screws initially and tighten one by one using the 5mm Hex Key. Do not over tighten.



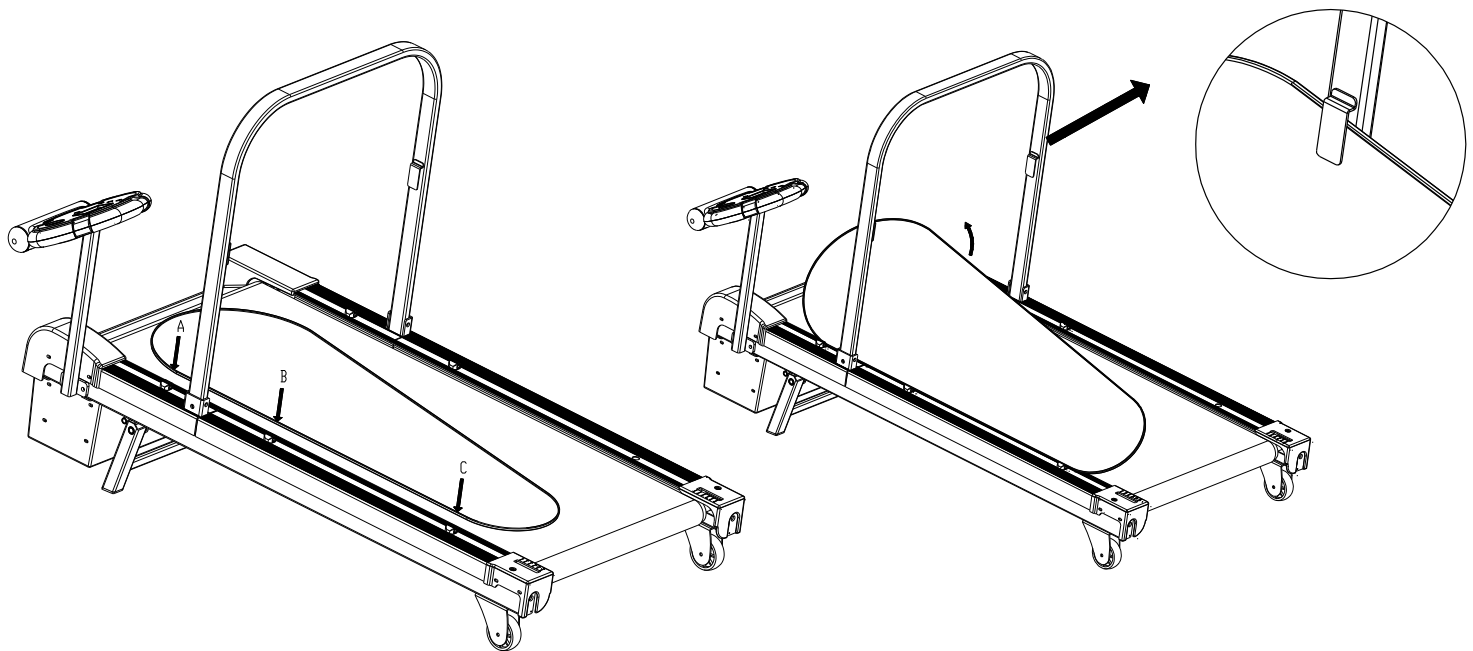
## 3.0 Connect the computer

1. Put the computer with the cable through the leg and connect the computer to the leg using ST4.2\*12 screws (see diagram).
2. Connect the computer with the cable connector.
3. Connect the computer to the treadmill with two screws (ST4.2\*12)



## 4.0 Attach side panels

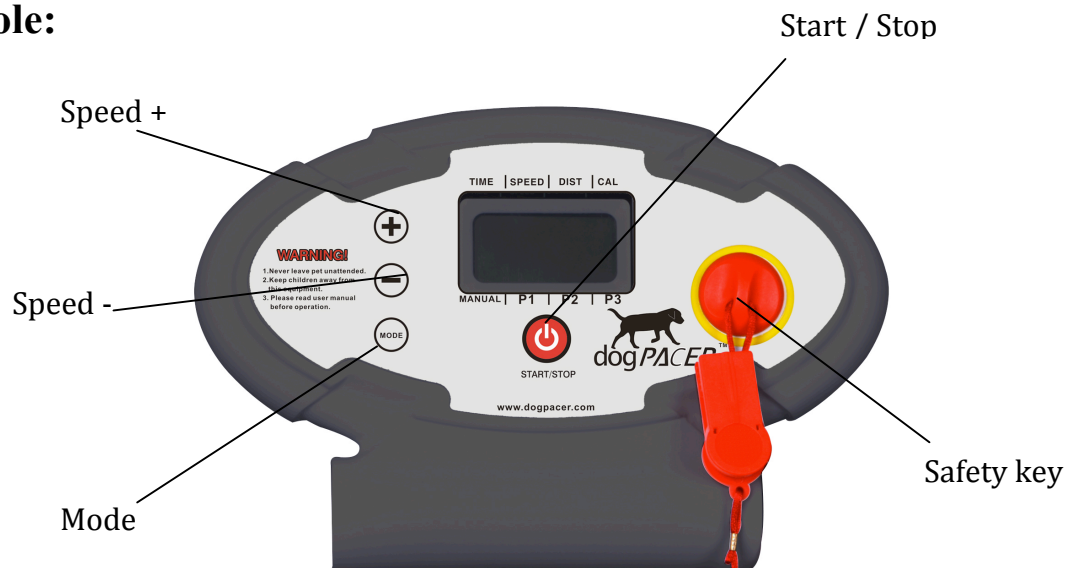
1. When the dogPACER is in position, lay the side panel down on the belt. Insert the side panel to the rubber clips (A, B & C) on the P.V.C. side rails.
2. Put the upper part of the side panel under the fixed clip on upper bar (see diagram below).



## 5.0 Starting your dogPACER

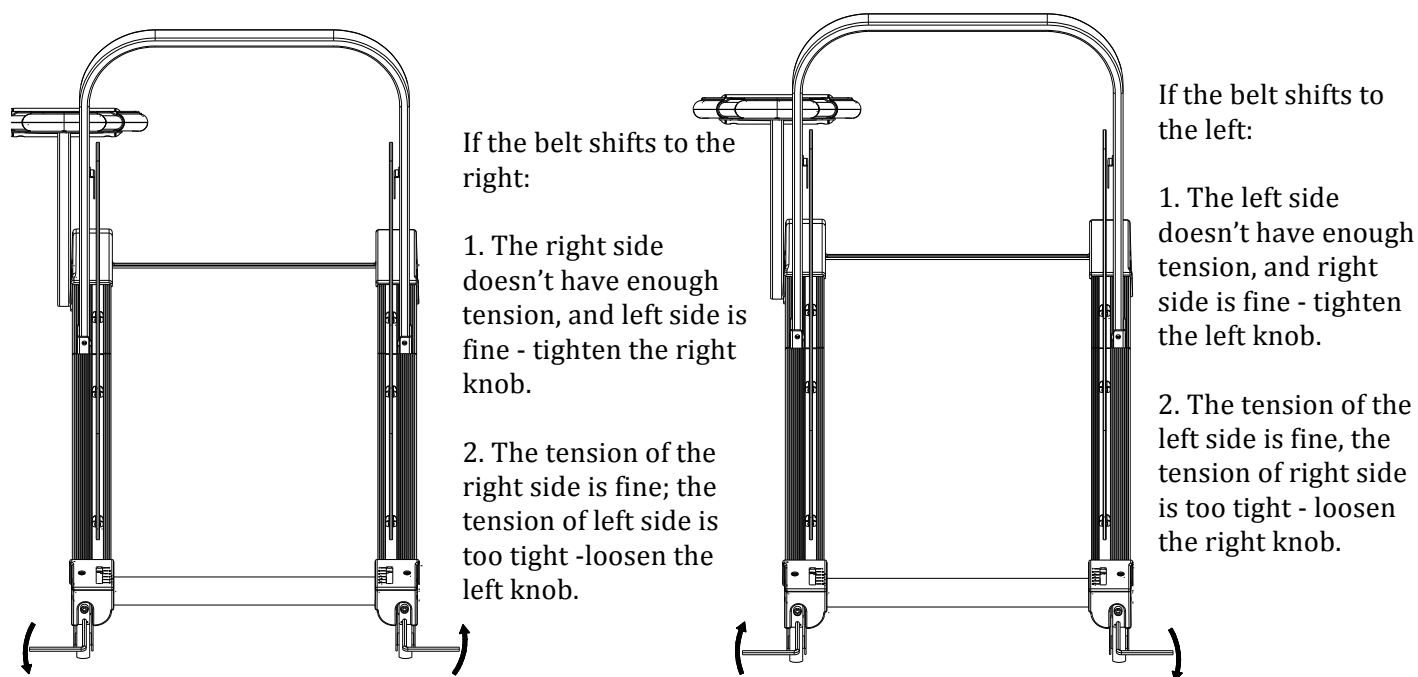
Connect the power cable to the machine and an outlet. Make sure the Safety Key is in its place. Turn the switch to ON mode (amber light).

## 6.0 Computer console:



## 7.0 Belt tracking adjustment (ONLY IF NEEDED. DO NOT ADJUST OUT OF THE BOX):

1. Start the treadmill by pushing the start/stop button.
2. At minimum speed, go to the back of the dogPACER and see if the running belt stays in the middle. If it shifts to the right or left do the following:



## 8.0 After set up – Quick Start Operation:

1. Press and release the START/STOP to begin belt movement, at 0.5 MPH, then adjust to the desired speed using the '+' or '-'.
2. To slow the treadmill down, press and hold the '-' key to desired speed.
3. In a state of running, single press START/STOP, the walking belt will gradually slow down to a stop.

### Calorie Display

Displays the cumulative calories burned at any given time during your pet's workout.

Note: This is only a rough guide used for comparison of different exercise sessions, which cannot be used for medical purposes.

## 9.0 Pre-set programs

Each pre-set program has a maximum time of 30-minutes per workout. It will always start at 10 min and can be adjusted to suit your pet's level.

Choose from P1, P2, or P3 to give your pet the desired exercise. Each program has various speed changes throughout the program (see list of programs in User Manual).

Power on the machine, press 'MODE' to choose desired program, then press and release 'START/STOP' to begin the program with default values.

**For any further information, trouble shooting or help please  
see dogPACER User Manual or go online to:  
[www.dogpacer.com](http://www.dogpacer.com)**

**Warranty:** YOU HAVE 60 DAY TO REGISTER THIS PRODUCT, VISIT: [www.dogpacer.com](http://www.dogpacer.com)

### **Technical support**

dogPACER provides technical support. Please write an email to –  
[support@intlpetgroup.com](mailto:support@intlpetgroup.com)

For further information and help please see USER'S MANUAL or for FAQ's and instructional videos go to: [www.dogpacer.com](http://www.dogpacer.com)



**YOUR DOG'S OTHER BEST FRIEND**